

Tifo.WIRE

CABLE TRELLIS SYSTEM



Your Tifo.Wire Cable Trellis

Tifo.Wire Cable Trellis System

The Tifo.Wire Cable Trellis System from European design uses a combination of cable wire fixtures to provide structural support to climbing plants growth on building facades. It is simple and practical to guide plant growth up vertically forming aesthetic green facades. It is ideal for a wide range of Green Wall projects providing an environmental friendly and sustainable solution for design and construction professionals to beautify walls and fences with variety of green climbing plants. Tifo.Wire wall mount and clamping assemblies utilize an innovative, fully adjustable stainless steel cable in varying trellis layouts and patterns. The high strength weather resistant composite cable materials match the performance of stainless steel cable trellis system at a fraction of the cost, is simple to install and fully recyclable.

As a cable wire supplier in the industry for many years, Tifo.Wire is embarking on providing the total solution of cable trellis system for green facades by deploying the contemporary design in Europe, which fully complies with highly corrosion resistant A4-AISI 316 stainless steel standard. We have factories that provide full facilities to manufacture wire rope assembly to meet the needs of current Trellis System market.

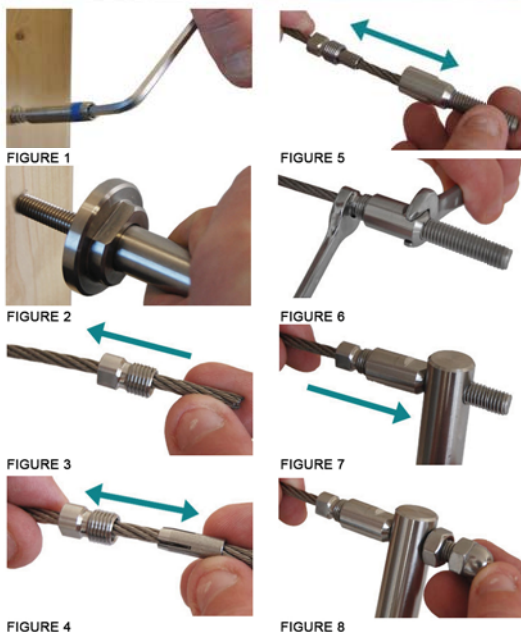
USER FRIENDLY MATERIALS — a sustainable solution and life long performance.

- Tifo.Wire Cable Trellis System is practical, easy and fast to install and support every climber plant trained to grow up or may also be cascaded down to form the green wall.
- To plan the growth of climbing plants, it is essential to consider the way of plant growth behavior in connection with the installation. Some plants tend to grow primarily in height and others in width.
- In general, for vigorous and faster growing plants use 500mm spacing. And for medium to slower growing plants use 300mm spacing.
- For lighter climbing plants, choose between 2.5mm wire cable and M6 fixing fittings. For larger and heavier plants, choose 4mm cable wire and M8 fixing fittings.
- Typically for a square meter of coverage, the system weighs only 20-30 kg when planted.
- Maintenance is simple and straightforward and is carried out at the planter level. If required, plant replacement is also a simple task.

Tifo.Wire - Cable Trellis System

Stainless Steel Wall Mount Unit For Cable Trellis

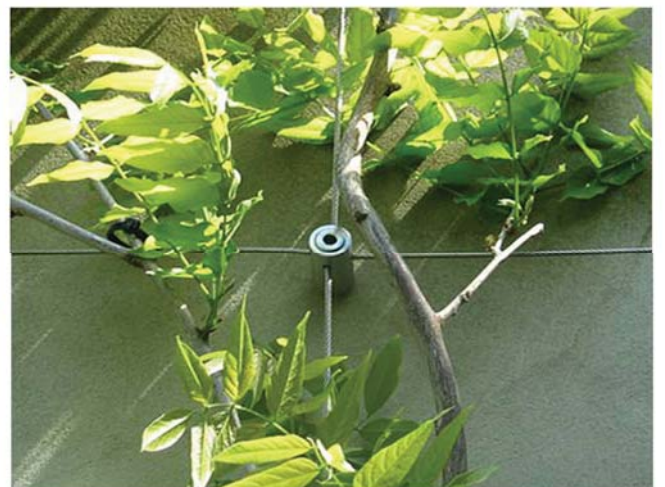
The arrangement goes at the oppsite end of the cable run.



- Innovative and practical corrosion resistant, 316 stainless steel cable trellis fitting
- Suitable for all climbing plants
- Ideal for use on walls and fences
- Supports 2.5 to 4mm cable both vertically and horizontally
- Strong, practical and versatile
- Easy to install
- Reusable
- Wall mount fittings, cable and tensioners available from stock

Tifo.Wire - Cable Trellis System

Clamping for Horizontal And Vertical Grid



Tifo.Wire - Cable Trellis System

Stainless Steel Cross Clamp Wall Attachments For Cable Trellis

- Innovative and practical, 316 stainless steel cable trellis fitting
- Suitable for all climbing plants
- Ideal for use on walls and fences
- Supports 4mm cable wire both vertically and horizontally
- Strong, practical and versatile
- Easy to install
- Reusable
- Attachment fittings, cable and tensioners available from stock



Installs in seconds!



Insert Anchor plug



Attach to wall



Fit cables & tension



Stainless Steel

Components:

- Tapped Crossover Clamp
- Stud
- Nuts
- Penny Washer
- Anchor plug

Standard Cable Trellis System

| Cable Diameter | Metric Thread Length | Distance From Wall | Overall Length | Head Length | Weight (g) |
|----------------|----------------------|--------------------|----------------|-------------|------------|
| 3 & 4mm | M8 | 95-100mm | 140mm | 23.5mm | 95 |

Tifo.Wire - Cable Trellis System Cross Clamp Wall Attachment Installation Guide



Figure 1

Setting out spacing of attachments.



Figure 2

For each fitting: drill a 10mm diameter hole.



Figure 3

Insert a 100mm anchor plug



Figure 4

Assemble fitting by threading 1 x washer and 2 x nuts onto double headed screw in that order.



Figure 5

Screw crossover clip onto thread.



Figure 6

Use key to drive assembled fitting into the wall. Tighten nut against the washer and nut against the base of the crossover clamp.



Figure 7

Remove retaining bolt of cross clamp.



Figure 8

Lay the first cable into the deepest slot.



Figure 9

Lay second cable into shallow slot. Hand tension cable between fittings and clamp. Insert retaining bolt to hold cable firmly.



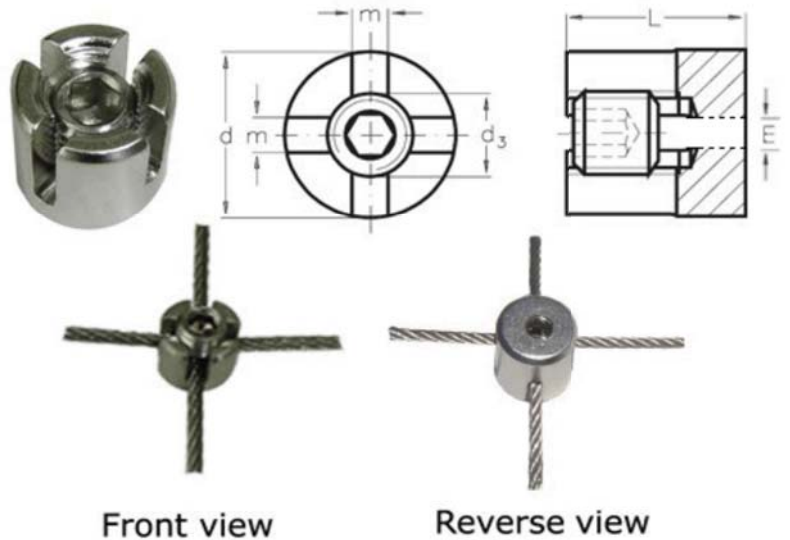
Figure 10

Add the end caps to each cut end of cable.

Tifo.Wire - Cable Trellis System

Stainless Steel Crossover Clamp

- Highly corrosion resistant, 316 stainless steel crossover clamp
- Fix both horizontal and vertical cable runs
- Easy to use
- No specialist tools needed
- Reusable for future projects
- Attached to M8 threads can be used for countless applications
- Perfect for wall mount cable trellis system



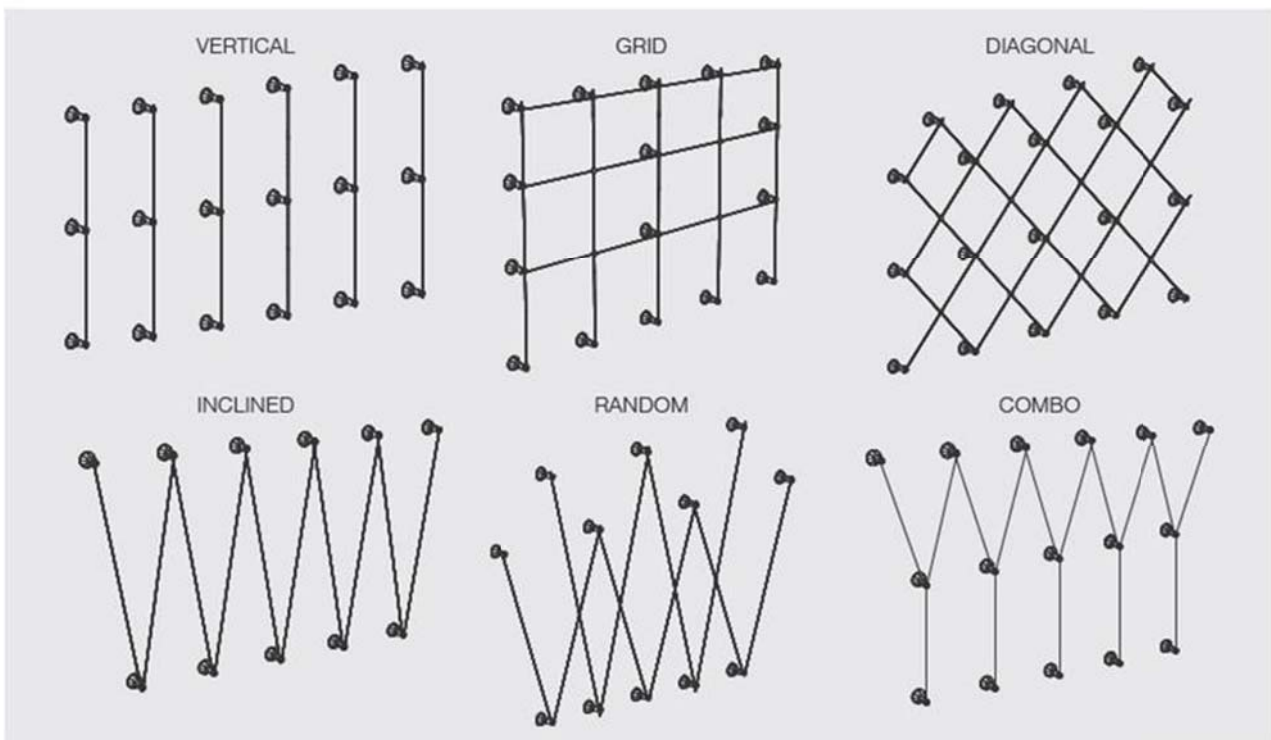
| Cable Diameter | D (mm) | D3 (mm) | L (mm) | m (mm) | Weight (g) |
|----------------|--------|---------|--------|--------|------------|
| 3mm and 4mm | 20 | M8 | 21 | 4 | 33.6 |

Tifo.Wire - Cable Trellis System

Cable Trellis Design Layout Options

- Cable Trellis fittings are available in different grid sizes and spacings.

Note: To support the growth of individual plants it is wise to consider the way the plant grows. As a rule, a cable grid with 500mm spacings is for vigorous climbing plants, but 300mm is preferable for medium and slower climbers.

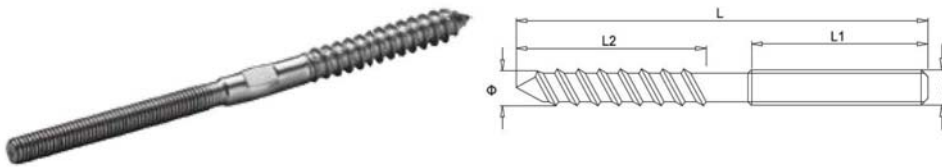


Tifo.Wire fittings suit for different layout of cable trellis and facades

Tifo.Wire - Cable Trellis System

Stainless Steel Dual Thread Terminal

- 316 stainless steel dual threaded screws
- Highly corrosion resistant
- Very adaptable component
- Suitable for wood, stone and concrete with anchor plug
- The thread when used at opposite end will allow the cable to be tensioned

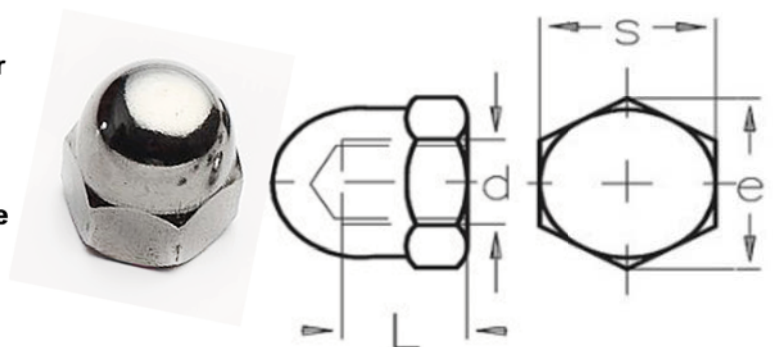


| G Thread ϕ | L (mm) | L1 (mm) | L2 (mm) | Weight (g) |
|-----------------|--------|---------|---------|------------|
| M8 | 110 | 60 | 40 | 32 |

Tifo.Wire - Cable Trellis System

Stainless Dome Nuts

- 316 stainless steel hexagon dome nut
- Adaptable and versatile
- Highly corrosion resistant so suitable for outdoor use
- Polished stainless finish
- Perfectm decorative rounded end termination on studding for trellis system many compatible threaded fittings in stock

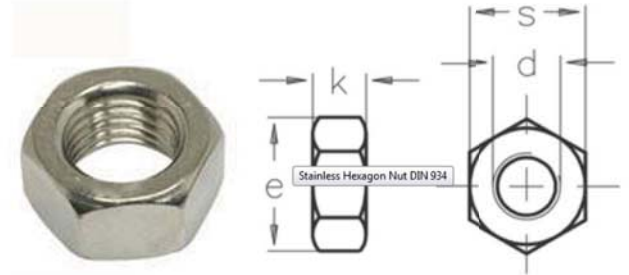


| Thread size | L (mm) | e (mm) | s (mm) | Weight (g) |
|-------------|--------|--------|--------|------------|
| M8 | 11 | 14.4 | 13 | 8.5 |

Tifo.Wire - Cable Trellis System

Stainless Steel Hexagon Nuts

- Multi-purpose 316 stainless steel Hexagon Nuts
- Highly corrosion resistant so perfect for outdoor use
- Polished stainless finish
- Many compatible threaded fittings in stock

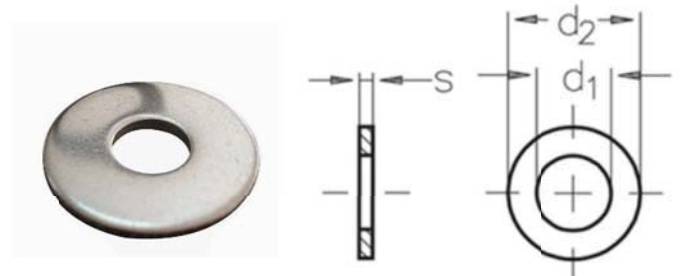


| Cable diameter (mm) | E (mm) | K (mm) | S (mm) | Net Weight (g) |
|------------------------|-----------|-----------|-----------|-------------------|
| M8 | 14.4 | 6.5 | 13 | 4.6 |

Tifo.Wire - Cable Trellis System

Stainless Steel Penny Washers

- stainless steel washer
- Highly corrosion resistant
- Brushed stainless steel finish
- Many compatible threaded fittings in stock

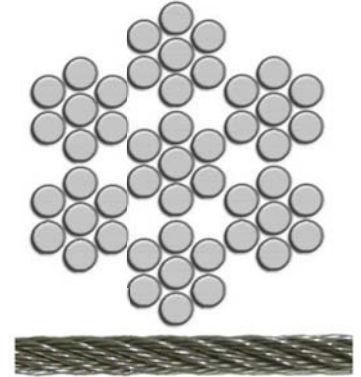


| Cable diameter (mm) | d1 (mm) | d2 (mm) | S (mm) | Net Weight (g) |
|------------------------|------------|------------|-----------|-------------------|
| M8 | 8.5 | 25 | 1.5 | 5 |

Tifo.Wire - Cable Trellis System

Stainless Steel 7x7, A4-AISI 316 (Flexible) 1570 Tensile Strength

- Premium quality, highly corrosion resistant, marine grade, 316 stainless steel cable
- Low-twist, flexible, true to size, clean and preformed
- Good flexibility
- polished and decorative with high breaking strength
- Cable tools and end fittings available from stock
- Order by the metre or pre-reeled lengths
- applications where medium flexibility is required
- Excellent for pull type control cables, garden trellis, catenary cable suspension, cable balustrading, architectural cables, security cables and displays.
- Recommended cable for trellis systems as plants grip to it better



| Diameter (mm) | Tensile | MBL (kgs) | MBL (kN) | WLL (kgs) | WLL (kN) | Weight kg per 100m |
|---------------|---------|-----------|----------|-----------|----------|--------------------|
| 4 | 1570 | 919 | 9.01 | 184 | 1.80 | 6.3 |

Cable Technical Specification

Diameter: 4.0mm
Construction: 7x7 (Flexible)
Core: WSC (Wire Strand Core)
Material: Stainless Steel 1570N/mm² A4-AISI 316
Standard: DIN 3055
MBL: 919 kgs (9.01kN)
WLL: 184 kgs (1.80kN)
Weight: 6.3 kg per 100m